

Checkweighing



Model 351

Model 355

Model 465

Model 562



Designed for Speed

Checkweighing Scales from GSE are the first choice when rapid throughput, ease of use, and durability are top priorities. Choose from a complete range of industrial checkweighers made for automatic or manual filling, portioning, or quality control. With features like 3 modes of operation, non-volatile Time and Date Clock, and Fast Target, GSE Checkweighers streamline your quality assurance process.

3 Modes of Operation

During setup, choose to view percent of target, fixed target deviation, or fixed over/under values. With Models 465, and 562, these operation modes can be locked for security or easily changed in process by the operator.

Flexible Target Weight Entry

All GSE Checkweighers have multiple methods for setting tolerance, target, and accuracy requirements. With the Fast Target feature, no programming is needed to set the target weight. Just place target product weight on platform and press Target. Target weights and accuracy settings can also be keyed in manually or downloaded via standard communication protocols.

Connectivity

All GSE Checkweighers are compatible with multiple networks and protocols. From a PC, download target weights to simplify users' tasks. Manage data with Wedge™ Software. With optional Wedge Plus™ Software, manage databases, obtain real-time data, log data in the background, and more. Via ethernet (wired), bi-directional RS232, RS485, 20mA current loop, fiber optics, or optional RF (radio frequency) communication, checkweighers can communicate or integrate with a variety of machines, peripherals, and PCs.

APPLICATIONS

- Wet Food Processing
- Pharmaceutical Processing
- General Weighing
- Industrial Processing
- General Filling
- Kit Assembly
- Parts Counting
- Percent Weighing

ETHERNET



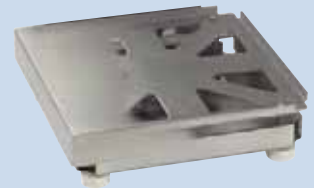
Modbus

Modbus TCP/IP

DeviceNet



351 & Washdown
355, 465, 562



Platform Construction

- Open Platform Design
- Stainless Steel Shroud

General Industrial
355, 465, & 562



Platform Construction

- Cast Aluminum: 10 lb—200 lb
- Stainless Steel Shroud

Column Construction

- 21" Stainless Steel Column:
12" x 12": 10 lb—100 lb
- 21" Carbon Steel Column:
12" x 18": 50 lb—200 lb
18" x 18": 50 lb—200 lb



Model 351 Checkweigher

The Model 351 Checkweigher is designed for harsh, wet environments. The innovative OPD (Open Platform Design) makes cleaning quick and effortless. Easily change target values, over/under tolerances, and units of measure in seconds.

FEATURES

- Washdown Applications
- Sanitation and HACCP compliant
- Bright Red-Green-Yellow LED Status:
Over (+), Accept (Ok), Under (-) Indication
- Rapid Display Update every 50 ms (milliseconds)
- Units: lb, oz, kg, g, lb-oz
- 3 Buttons for Easy Use
- NTEP, ANSI Approved
- 3 Cut-proof Keys



Specifications

	Model 351 Checkweigher	Model 355 Checkweigher	Model 465 Checkweigher	Model 562 Checkweigher
PERFORMANCE				
Full Scale	Factory preset based on capacity	Factory preset based on capacity	Factory preset based on capacity	Factory preset based on capacity
Resolution	5000d displayed	5000d displayed (4000d for 20 lb, 200 lb capacities)	5000d displayed (4000d for 20 lb, 200 lb capacities)	5000d displayed (4000d for 20 lb, 200 lb capacities)
A/D Conversion	60 Hz	60 Hz	60 Hz	60 Hz
Operating temperature	14 °F to 104 °F (-10 °C to 40 °C)	14 °F to 104 °F (-10 °C to 40 °C)	14 °F to 104 °F (-10 °C to 40 °C)	14 °F to 104 °F (-10 °C to 40 °C)
Warranty	2 Year Limited	2 Year Limited	2 Year Limited	2 Year Limited
Units of Measure	kg, lb, g, lb-oz, oz	kg, lb, g, lb-oz, oz	4 user selectable per scale: kg, lb, g, oz; 2 custom	4 user selectable per scale: kg, lb, g, oz; 2 custom
PHYSICAL				
Platform Size (inches)	10"x10", 12"x12"	12"x12", 12"x18", 18"x18"	12"x12", 12"x18", 18"x18"	12"x12", 12"x18", 18"x18"
Capacity (pounds)	10, 20, 50, 100, 200 lb	10, 20, 50, 100, 200 lb	10, 20, 50, 100, 200 lb	10, 20, 50, 100, 200 lb
Maximum Overload (% F.S.)	200	200	200	200
ELECTRICAL				
Power Requirement	90–250 VAC / 12–36 VDC	90–250 VAC / 12–36 VDC	90–250 VAC / 10–32 VDC	90–250 VAC / 10–32 VDC
Excitation Voltage	10 VDC	10 VDC, short circuit protected	10 VDC, short circuit protected; 340 mA	10 VDC, short circuit protected; 340 mA
F.S. Signal Input	0.1–20 mV/V	0.1–20 mV/V	0.1–20 mV/V	0.1–20 mV/V
OPERATION				
Remote Input	1 Momentary Contact (100 ms minimum): TARE, PRINT, ZERO	1 Momentary Contact (100 ms minimum): TARE, PRINT, ZERO	2 Momentary Contacts (100 ms minimum), Custom Function	2 Momentary Contacts (100 ms minimum), Custom Function
Keypad	3 Key, Cut-proof	21 Key, Full Numeric, Chemical Resistant Elastomeric (Rubber)	22 Key, Alpha Numeric, Chemical Resistant Elastomeric (Rubber)	22 Key, Alpha Numeric, Chemical Resistant Elastomeric (Rubber)
COMMUNICATION				
Comm 1	RS232 Bidirectional serial port or RS485 opt. or 20 mA opt.	RS232 Bidirectional serial port or RS485 opt. or 20 mA opt.	RS232 Full Duplex or RS485 Multi-Drop opt. or 20 mA opt.	RS232 Full Duplex or RS485 Multi-Drop opt. or 20 mA opt.
Comm 2	N/A	TTL Port for optional Fiber Optic Module	RS232 Full Duplex	RS232 Full Duplex
Comm 3	N/A	N/A	N/A	RS232 Full Duplex
Data Output String	21 selectable fixed format transmissions available, or 1 custom format (programmable via RS232)	15 selectable fixed format transmissions available, or 1 custom format (programmable via RS232)	Up to 4 custom formats	Up to 100 custom formats
Protocol	N/A	RF	Modbus RTU, ASCII. Opt.: DeviceNet, Profibus, Ethernet (wired), HTTP, Telnet, FTP, Modbus TCP/IP, RF	Modbus RTU, ASCII. Opt.: DeviceNet, Profibus, Ethernet (wired), HTTP, Telnet, FTP, Modbus TCP/IP, RF
Baud Rate	150–115K bps	150–115K bps	150–58,300 bps	150–58,300 bps
DISPLAY				
Display	LED: Bright red, 6 Digit, 0.8" (22 mm)	LED: Bright green, 6 Digit, 0.8" (22 mm)	VFD: 6 Digit, 0.75" (19 mm) w/2x5 dot matrix	LCD: Graphic 8 line x 40 character backlight
Time/Date Clock	Non-volatile, Battery Backed	Non-volatile, Battery Backed	Non-volatile, Battery Backed	Non-volatile, Battery Backed
CONSTRUCTION				
Indicator Enclosure Material	Stainless Steel NEMA 4X (IP66)	Stainless Steel NEMA 4X (IP65)	Stainless Steel NEMA 4X (IP66)	Stainless Steel NEMA 4X (IP66)
Column Material	Stainless Steel NEMA 4X (IP66)	Gen. Ind.: Carbon Steel (12" x 18", 18" x 18") or Stainless Steel (12" x 12") Washdown: Stainless Steel NEMA 4X (IP66)	Gen. Ind.: Carbon Steel (12" x 18", 18" x 18") or Stainless Steel (12" x 12") Washdown: Stainless Steel NEMA 4X (IP66)	Gen. Ind.: Carbon Steel (12" x 18", 18" x 18") or Stainless Steel (12" x 12") Washdown: Stainless Steel NEMA 4X (IP66)
Column Height (inches)	18"	Gen. Ind. 21", Washdown 8.5"	Gen. Ind. 21", Washdown 8.5"	Gen. Ind. 21", Washdown 8.5"
Platform Material	Stainless Steel	Gen. Ind.: Cast Aluminum Stainless Steel shroud Washdown: Stainless Steel	Gen. Ind.: Cast Aluminum Stainless Steel shroud Washdown: Stainless Steel	Gen. Ind.: Cast Aluminum Stainless Steel shroud Washdown: Stainless Steel
OPTIONS				
RS485 Module	Isolated multi-drop with 251 devices max, half or full duplex up to 4000 ft, 9600 bps max, replaces RS232 port	Isolated multi-drop with 251 devices, half or full duplex up to 4000 ft, 115K bps max, replaces RS232 port	Multi-drop with 251 devices, half or full duplex up to 4000 ft, replaces RS232 port 1	Multi-drop with 251 devices, half or full duplex up to 4000 ft, replaces RS232 port 1
20mA Current Loop	Isolated, TX-Active or Passive, RX-Passive, 9600 bps max, 12 VDC, 1000 ft, replaces RS232 port	Isolated, TX-Active or Passive, RX-Passive, 9600 bps max, 12 VDC, 1000 ft, replaces RS232 port	Isolated, TX-Active or Passive, RX-Passive, 9600 bps max, 12 VDC, 1000 ft, replaces RS232 port 1	Isolated, TX-Active or Passive, RX-Passive, 9600 bps max, 12 VDC, 1000 ft, replaces RS232 port 1
Analog Output Module	N/A	Active Only, 0–10 VDC, 0–20 mA or 4–20 mA, mounts internally	Active Only, 0–10 VDC, 0–20 mA or 4–20 mA, absolute zero and F.S. values are programmable, 16 bit resolution	Active Only, 0–10 VDC, 0–20 mA or 4–20 mA, absolute zero and F.S. values are programmable, 16 bit resolution
Relay Output Module	N/A	Three (3) solid state relays, mounts internally. Display annunciators indicate output status. Excludes Model 355 I.S.	Optically isolated, 20–240 VAC and 3–60 VDC I/O modules, 1–3A rating (module dependent)	Optically isolated, 20–240 VAC and 3–60 VDC I/O modules, 1–3A rating (module dependent)
Stainless Steel Load Cell	Includes a Stainless Steel load cell shield	N/A	N/A	N/A
Database Module	N/A	N/A	N/A	256K opt.
Wedge Plus™ Software	Real-time data collection	Real-time data collection	Real-time data collection, log data in background, and database functionality	Real-time data collection, log data in background, and database functionality
Stainless Steel Indicator Column	N/A	Gen. Ind. 21"	Gen. Ind. 21"	Gen. Ind. 21"
Checkweigher Stacklight Kit	N/A	Gen. Ind. Use Only. Bright LED with Red, Green, Yellow lights. Height from top of enclosure to top of light 14" (35.6 cm). Diameter 1.57" (40 mm). Includes Quad Output Module 3–60 VDC	Gen. Ind. Use Only. Bright LED with Red, Green, Yellow lights. Height from top of enclosure to top of light 14.5" (36.8 cm). Diameter 1.57" (40 mm). Includes Quad Output Module 3–60 VDC	Gen. Ind. Use Only. Bright LED with Red, Green, Yellow lights. Height from top of enclosure to top of light 14.5" (36.8 cm). Diameter 1.57" (40 mm). Includes Quad Output Module 3–60 VDC
Battery Module	N/A	NiMH, 8 hours continuous use with (1) 350 ohm load cell. Cannot be installed with Analog Output Module, Relay Output Module, or Stacklight	N/A	N/A
Approvals	NTEP: 10, 20, 50 lb (100, 200 lb NTEP Pending)	Gen. Ind. NTEP: 18"x18" Platform (100, 200 lb). All other sizes NTEP Pending. Washdown NTEP: 10, 20, 50 lb (100, 200 lb NTEP Pending) NTEP: Indicator	Gen. Ind. NTEP: 18"x18" Platform (100, 200 lb). All other sizes NTEP Pending. Washdown NTEP: 10, 20, 50 lb (100, 200 lb NTEP Pending) NTEP: Indicator	Gen. Ind. NTEP: 18"x18" Platform (100, 200 lb). All other sizes NTEP Pending. Washdown NTEP: 10, 20, 50 lb (100, 200 lb NTEP Pending) NTEP: Indicator

Washdown Food & Pharmaceutical Grade

Model 355 Checkweigher

The Model 355 Checkweigher is designed for washdown or general industrial checkweighing applications. Model 355 features a *printable* Product ID. It also has a full numeric keypad for fast numeric target entry.

FEATURES

- Washdown Food and Pharmaceutical Grade IP65 or General Industrial Splashproof IP64 Protection
- Full Numeric Keypad for Numeric Target Entry
- Bright Red-Green-Yellow LED Status for Over (+), Accept (Ok), Under (-) Indication
- Stacklight Option: Bright Red-Green-Yellow LED Status and Over (+), Accept (Ok), Under (-) Indication
- Rapid Display Update every 50 ms (milliseconds)
- Units: lb, oz, kg, g, lb-oz
- Easy to Use

Washdown Checkweighers



Model 465 Checkweigher

The Model 465 Checkweigher is designed to simplify your checkweighing with advanced features such as easy to read prompts and 20 Alpha-Numeric Product ID#s. Key in product ID# to recall product target values, and accuracy settings. Model 465 can be customized by your GSE distributor to display additional fields, product information, description, and lot number, or customized for job kitting validation.

FEATURES

- Washdown Food and Pharmaceutical Grade IP66 or General Industrial Splashproof IP64 Protection
- Human-Readable Over/Good/Under Indication can be customized for multi-languages by your distributor.
- Stacklight Option: Bright Red-Green-Yellow LED Status for Over/Good/Under Indication
- Rapid Display Update every 50 ms (milliseconds)
- Units: lb, oz, kg, g, lb-oz, and 2 Custom Units
- Easy Setup



Model 562 Checkweigher

The Model 562 Checkweigher is designed to further simplify process efficiency. With 40 (or more) Alpha-Numeric Product ID#s and 2 Display Styles, view product ID# by name or number or display style based on Net, Gross, and Count. Key in product ID# to recall display style, associated product information, description, accuracy settings, target weight. The operation mode and display style can be changed mid-workflow, without needing to return to setup. With the expandable database option, add up to 80 additional product ID#s, and customizable fields such as statistical data, product information, description, and lot number. Set up menus are easy to read and navigate. Display shows visual indication of Target Value, Product ID#s, and HI/LO limits. Model 562 can also be customized by your GSE distributor for SPC, SQC, and job kitting validation.

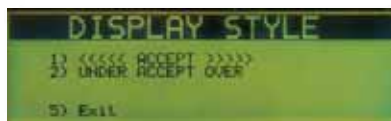
FEATURES

- Washdown Food and Pharmaceutical Grade IP66 or General Industrial Splashproof IP64 Protection
- Bargraph Indicator (shows proximity to target) and human readable Over/Accept/Under Indication can be customized for multi-languages by your distributor.
- Stacklight Option: Bright Red-Green-Yellow LED Status and Over/Accept/Under Indication
- Rapid Display Update every 50 ms (milliseconds)
- Units: lb, oz, kg, g, lb-oz, and 2 Custom Units
- User Friendly Set Up Menus (changeable display styles and operation modes)



and General Industrial Weighing

General Industrial Checkweighers



355, 465, & 562
Checkweigh Stacklight
Kit Option



Intrinsically Safe
Checkweighers available.



Product Line



Parts Counting



Airline Systems



Floor Scales



Hazardous Area Weighing



Portable Scales



Software/
Peripherals



Bench Platforms



Checkweighers



Tank & Vessel
Weighing Assembly



Indicators



Overhead Weighing



Heavy Capacity
Vehicle Scales

Your local distributor is:



SPX GSE Scale Systems

42860 Nine Mile Road
Novi, MI 48375 USA
Phone: 248-596-0600
Fax: 248-596-0601
Toll Free: 800-755-7875
www.gse-inc.com

Lüripper Straße 62
41065 Mönchengladbach Germany
Phone: 0049 (0) 2161-59906-11
Fax: 0049 (0) 2161-59906-20
www.gse-europe.de

ETHERNET



DeviceNet



Designed and built with pride in the U.S.A.

Graph307 6/06 2M FR